

Restaurant Menu

All onboard purchases must be made in cash only.

Please have adequate cash (Japanese yen) to use on board

as we do not accept cashless or credit card payments on board.

No currency exchange services are available onboard, in or around the ports.

LIGHT MEAL MENU

OUR RECOMMENDATIONS



Ferry Champon Noodles ¥800

Our Most Popular Dish!

Start your voyage with this legendary Champon!
Its unique soup, impresses even Nagasaki natives.
(Nagasaki is the origin of champon noodles.) Please be aware that due to its popularity this dish often gets sold out pretty quickly.



Stir-fried Vegetable Meal Set ¥650

Can be ordered separately too for ¥450

Too delicious!
An impressive dish!
※served only on
Vessels 104(12:45), 105(14:35), 106(18:45) dep. Yawatahama
and Vessels 203(11:35), 204(15:40), 205(17:30) dep. Usuki



Original Ferry Curry – currently unavailable ¥750

Sorry this dish is currently unavailable!
Our curry is rich and thick but not too spicy!
It is made with our very own selection of spices simmered together long and slowly.
It's so tasty you will want to have it again soon.
※served only on
Vessels 104(12:45), 105(14:35), 106(18:45) dep. Yawatahama
and Vessels 203(11:35), 204(15:40), 205(17:30) dep. Usuki



Beef-Suki Bowl with Miso Soup ¥850

A rice bowl version of Sukiyaki!
Meat and vegetables cooked Sukiyaki-style in a sweet thick gravy. A really delicious one-bowl-dish.
※served only on
Vessels 104(12:45), 105(14:35), 106(18:45) dep. Yawatahama
and Vessels 203(11:35), 204(15:40), 205(17:30) dep. Usuki

BOWL MEALS



Beef-Suki Bowl with Miso Soup ¥850

A rice bowl version of Sukiyaki!
Meat and vegetables cooked Sukiyaki-style in a sweet thick gravy. And served with Miso Soup.
※served only on
Vessels 104(12:45), 105(14:35), 106(18:45) dep. Yawatahama
and Vessels 203(11:35), 204(15:40), 205(17:30) dep. Usuki



Yaki-tori Rice Bowl ¥650

Aromatic grilled chicken basted in sweet sauce served on rice. The sweet and salty combination makes it really mouthwatering.

※served only on

Vessels 104(12:45), 105(14:35), 106(16:25) dep. Yawatahama and Vessels 203(11:35), 204(15:40), 205(17:30) dep. Usuki

DISCONTINUED

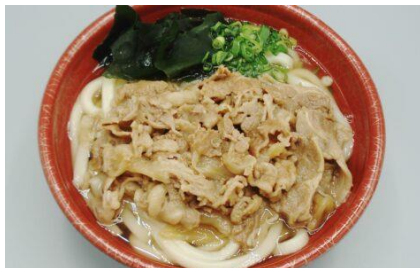
NOODLE MEALS



Ferry Champon Noodles ¥800

Our Most Popular Dish!

Start your voyage with this legendary Champon! Its unique soup, impresses even Nagasaki natives. (Nagasaki is the origin of Champon noodles.) Please be aware that due to its popularity this dish often gets sold out pretty quickly.



Niku (Meat) Udon Noodles ¥750

A simple yet heartwarming and belly warming noodle meal. Available on all departing ferries during restaurant open hours.



Kitsune Udon Noodles with large Tofu Age ¥650

A huge slice of sweetened Fried Tofu tops these standard classic udon noodles. Kitsune means fox. Legend has it that foxes loved Tofu Age which to them resembled mice. Foxes were revered for protecting rice harvests from mice.

Available on all departing ferries during restaurant open hours.



Yawatahama Jako-ten Udon Noodles ¥650

Some things never change. One of them is Jako-ten, loved by locals since 1614. Jako-ten is a deep-fried (glowbelly) fish-paste patty traditionally made by craftsmen in Yawatahama. This noodle dish is an "All-star Collaboration" with Kagawa's Udon noodles topped with Ehime's Jako-ten and Tokushima's wakame seaweed to complete your Shikoku seafood voyage.

Available on all departing ferries during restaurant open hours.



Yawatahama Jako-ten Udon Noodle Meal Set ¥750

Jako-ten Udon Noodles with rice and pickles.

※served

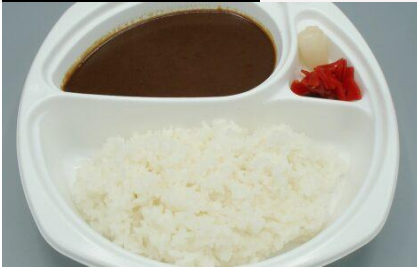
Vessels 104(12:45), 105(14:35), 106(16:25) dep. Yawatahama and Vessels 203(11:35), 204(15:40), 205(17:30) dep. Usuki

[rice can be ordered separately] for ¥100 only on

Vessels 107(21:00), 101(1:15), 102(2:50) dep. Yawatahama and Vessels 206(22:20), 207(23:55), 201(4:45) dep. Usuki

DISCONTINUED

LIGHT MEALS



Original Ferry Curry – currently unavailable ¥750

Sorry this dish is currently unavailable!

Our curry is rich and thick but not too spicy!

It is made with our very own selection of spices simmered together long and slowly.

It's so tasty you will want to have it again soon.

※served only on

Vessels 104(12:45), 105(14:35), 106(18:45) dep. Yawatahama and Vessels 203(11:35), 204(15:40), 205(17:30) dep. Usuki

MORNING MENU



Morning Set– currently unavailable ¥510

Start your day with our Morning Set.

Crisp toast, a hardboiled egg, margarine and 3 times the Gold Medal Award winner 'Orange le...' coffee or orange juice.

※served only on

Vessel 103(8:40) after boarding at Yawatahama and Vessel 202(7:45) after departing from Usuki

OTHERS



Hot Coffee ¥200

The beans- we use are Rainforest Alliance Certified 'Orange Ferry Brand' beans

The water- we use is Miyazaki Prefecture's 'Kirishima Island Natural Mineral Water.' We grind the beans only after an order is made, to provide you with a high quality aromatic cup of coffee.



Original Soft-serve Ice-cream ¥350

Made with freshly drawn cow's milk, this is a creamy, rich and refreshing soft-serve ice-cream.

NOTICE ABOUT PLASTIC BAGS

As of July 2020 it is compulsory to charge for plastic bags. However our company uses eco-friendly Biomass bio-degradeable bags so we provide them free when passengers make purchases. One bag per purchase.

FERRY SOUVENIR SHOP



Oita Speciality - Zabieru box of 6 ¥750

After landing in Kyushu in 1549 Japan's first ever Christian missionary Francis Xavier contributed to town development and set up of schools and hospitals. Commemorating his influence and exchange between Japan and the West, Zabieru was created. Japanese style white sweet bean-paste with Western style rum-raisins wrapped in buttery cake dough, blending to become a delicious treat, well-loved Oita in for over 50 years.



Oita Speciality - Zabieru box of 12 ¥1,250

After landing in Kyushu in 1549 Japan's first ever Christian missionary Francis Xavier contributed to town development and set up of schools and hospitals. Commemorating his influence and exchange between Japan and the West, Zabieru was created. Japanese style white sweet bean-paste with Western style rum-raisins wrapped in buttery cake dough, blending to become a delicious treat, well-loved Oita in for over 50 years.



Oita Speciality - Luisa box of 6 ¥660

In Oita Prefecture Saiki City Ume Town lie the remains of a convert girl, baptized to be named 'Luisa.' This famous sweet snack is named in her honor. It consists of white, sweet bean-paste encased in sponge cake dough, wrapped in aluminum foil and baked. The bean paste turns purple because a violet-colored liqueur is also used, creating a soft aromatic buttery confectionary.



Baby Poeme ¥980

Mini Version of the classic Poeme baked confectionary. Made using ingredients grown in the Seto Region's mild climate and fertile land and with a unique manufacturing technique these sweets are a combination of delicate-tasting Japanese sweets and the flavor-rich Western sweets.



Jako-Ten Assortment ¥1,000

This assortment allows you to try 8 slices of Jako-Ten made in Yawatahama. Jako-Ten is deep-fried fish-paste patties made from locally caught glowbelly fish. Fish-meat as well as tiny bones are ground to make the paste, giving it a unique flavor and high calcium content.



Aso no Ketchup ¥700

An excellent quality ketchup which has gained interest from the media. Handmade using ingredients grown on the foothills of Mt. Aso and from the Aso region and Kumamoto, with only reduced-pesticide vegetables and no additives. This ketchup is safe even for small children.

**Yoshino Torimeshi (Chicken Rice) Mix ¥1,000**

Enjoy delicious Yoshino Torimeshi in the comfort of your home. Freshly cooked Yoshino Chicken Rice is a culinary delight. This sealed pack, contains all you need to make it easily. Heat the pack in hot water or in the microwave and then mix it with freshly cooked rice. Juicy chicken, aromatic burdock, high quality ingredients and the traditional recipe make this dish a simple yet delicious unforgettable meal.

**Toriten Senbei (Rice Crackers) ¥700 ~ ¥1,170**
small pack ¥700 large pack ¥1170

Oita Prefecture's mysterious rice cracker snack. Ever since its release in Beppu City Higashi Soen on 28th July 2008 this snack has become the 'soul-food of Oita'. It is a Chicken Tempura flavored rice cracker nothing like anything else on the market in taste and texture. Why not take this some back with you to remember Oita by.

**Usuki Senbei (Crackers) ¥500 ~ ¥1,620**
6pc pack ¥500 18pc pack ¥1,620

'Usuki' means mortar or grinding bowl. These crackers are made to resemble mortars. There are two types – mortar-shaped thin curved crackers and more sturdy round flat thick crackers. Both types are handmade using traditional methods over 400 years old, ever since they were established as a non-perishable food apt for travel, by a past feudal lord. Even today they are slavered one by one with a ginger and sugar syrup before being baked. They are well-renowned as Oita's specialty.

**Shohachi Udon Noodles ¥870**

Enjoy the taste of real Kagawa Udon noodles with firm al dente yet smooth and chewy textured Shohachi Udon Noodles.

**DISCONTINUED****Shochu ¥3000 720ml**

Made in Kagoshima at Kawagoe Breweries
25% Made from Sweet Potato and Rice Koji
Mellow-toned and elegant sweetness.

DISCONTINUED**DISCONTINUED****Shochu - Sato Black ¥3000**

Made in Kagoshima at Sato Brewery.
25% Made from Sweet Potato and Rice Koji
An inter (misen) sweet potato shochu features to the utmost limit and sharpness for a strong tasting savory flavor. Diluted with water and slightly warmed.

DISCONTINUED



Shochu - Mao ¥4000
 Made in Kagoshima at Shiratama Brewery
 25% Made from Sweet Potato and Rice Koji
 Mao is an easy-to-drink flavor and super easy to drink 'on the rocks' really brings out its best. Sought-after so don't miss out if you get the chance to buy or taste it.



Shochu - Naka-naka ¥2000
 Made in Miyazaki at Kuroki Honten
 20% Made from Barley and Barley Koji
 All Shochu connoisseurs know Naka-naka Shochu. It is the only one aged in white oak barrels. Blend 'Hyakunen no Koi' and 'One Hundred Years of Solitude' by Gabriel Garcia Marquez. This shochu is well-balanced with a caramel nuance. It is refined and fragrant with a mild sweet aroma of barley.



Shochu ¥2000
 Made in Kagoshima
 26% Made from Sweet Potato and Rice Koji
 deep rich tasting shochu with a strong aroma.

Alcohol Menu

Alcoholic beverages can be purchased onboard, at the shop or from vending machines. (Prices include sales tax)



Asahi Super Dry large 500ml can ¥450
 Light sharp tasting super dry taste.



Asahi Super Dry small 350ml can ¥350
 Light sharp tasting super dry taste.



Kirin Hyoketsu Lemon ¥260
 Flavored with Sicilian Lemon for a crisp refreshing taste.